

# 2XD

**GENERAL PURPOSE**  
CONFIGURED PANEL



## Physical / Environmental

Operating Temperature Range	-18 °C – 50 °C (0 °F – 122 °F) *Heater in enclosure is required below -18 °C and 0 °F, de-rating required above 40 °C
Storage Temperature Range	-40 °C – 57 °C (-40 °F – 135 °F)
Enclosure	NEMA Type 3R: Outdoor   Rainproof
Altitude	Derate by 1% every 400 ft above 3,300 ft elevation

## Input Power

Input Phase	Single-phase
Input Voltage	230V
Input Voltage Range	190 V – 275 V
Input Frequency	60 Hz

## Output Power

Output Phase	Three-phase
Nominal Output Voltage	460V
Output Voltage Range	440V – 530V
Output Frequency	5 Hz – 300 Hz
Horsepower	5 HP - 15 HP
Output Power	7 - 12 kW
Switching Frequency	2 kHz – 8 kHz
Output	V/f control

## Electrical

Short Circuit Withstand Rating	5 kA RMS symmetrical Amps
Efficiency	> 98%
Startup Ramp Time	1 – 120 s
Shutdown Ramp Time	1 – 120 s or Coast to Stop
Overload Capacity	120% for 60 s



## Analog Inputs

Quantity	(3) Programmable
Current Reference	4 – 20 mA, (2) Inputs
Voltage Reference	0 – 5 VDC, (1) Input
Terminal Block Size	26 - 12 AWG

## Digital Inputs

Quantity	(4) Programmable
Ratings	< 5 V, galvanically isolated
Terminal Block Size	26 - 12 AWG

## Relay Outputs

Quantity	(4) Programmable
Rating	Relay 1: 28 VDC, 10 A or 250 VAC, 10 A Relay 2 : 30 VDC, 2 A at 125 VAC, 0.5A
Terminal Block Size	26 - 12 AWG

## Features

Certification	ETL listed to UL 61800-5-1 and CSA C22.2 No. 274-17
User Interface	Push button membrane keypad with backlit graphic display
Available Feature Sets	AquaPhase (Pump Control)



# Voltage Doubling

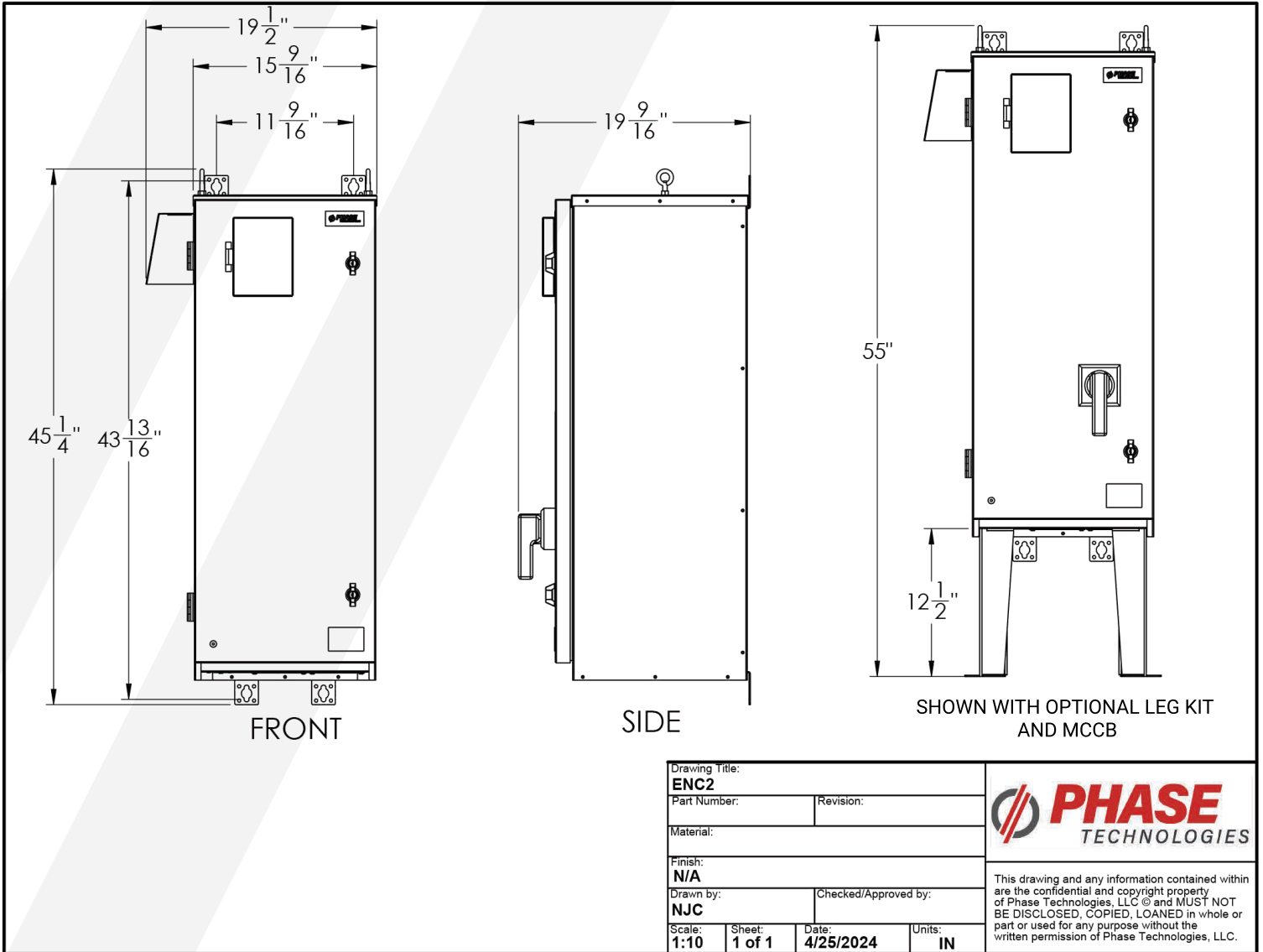
2X Voltage

Model / Part Number	HP	Rated Current (Input)	Rated Current (Output)	Fuse Rating (Recommended)	Circuit Breaker Rating (Recommended)
2XD205	5	30 A	9 A	60 A, 600 V	60 A
2XD007	7.5	52 A	13 A	110 A, 600 V	110 A
2XD010	10	64 A	18 A	125 A, 600 V	125 A
2XD015	15	87 A	24 A	175 A, 600 V	175 A





# ENC2





**DIGITAL PHASE  
CONVERTERS**

**VARIABLE  
FREQUENCY  
DRIVES**

**MOTOR  
PROTECTION**

**STARTER  
PANELS**

## **OUR MISSION**

*Relentlessly seek to provide Uncommon Value, solutions, innovation, and support for the industries that we serve.*

