

DX

GENERAL PURPOSE

CONFIGURED PANEL



Physical / Environmental

Operating Temperature Range	-18 °C – 50 °C (0 °F – 122 °F) *Heater in enclosure is required below -18 °C and 0 °F, de-rating required above 40 °C
Storage Temperature Range	-40 °C – 57 °C (-40 °F – 135 °F)
Enclosure	NEMA Type 3R: Outdoor Rainproof
Altitude	Derate by 1% every 400 ft above 3,300 ft elevation

Input Power

Input Phase	Single-phase or Three-phase
Input Voltage	230V 460V
Input Voltage Range	190V – 264V 440V – 520V
Input Frequency	50/60 Hz

Output Power

Output Phase	Three-phase
Nominal Output Voltage	230V 460V
Output Voltage Range	100V – 270V 200V – 530V
Output Frequency	5 Hz – 120 Hz
Horsepower	5 HP - 500 HP
Output Power	1.5 - 409 kW
Switching Frequency	2 kHz – 5 kHz
Output	V/f control or torque Control (Optional)

Electrical

Short Circuit Withstand Rating	65 kA RMS symmetrical Amps
Efficiency	> 98%
Startup Ramp Time	1 – 120 s
Shutdown Ramp Time	1 – 120 s or Coast to Stop
Overload Capacity	110% for 60 s



Analog Inputs

Quantity	(3) Programmable
Current Reference	4 – 20 mA, (2) Inputs
Voltage Reference	0 – 10 VDC, (1) Input
Terminal Block Size	26 - 12 AWG

Digital Inputs

Quantity	(4) Programmable
Ratings	< 5 V, galvanically isolated
Terminal Block Size	26 - 12 AWG

Relay Outputs

Quantity	(4) Programmable
Rating	Relay 1 : 30 VDC or 277 VAC, 10 A Relay 2 : 30 VDC or 277 VAC, 10 A Relay 3 : 30 VDC, 2 A or 125 VAC, 0.5 A Relay 4 : 30 VDC, 2 A or 125 VAC, 0.5 A
Terminal Block Size	26 - 12 AWG

Features

Certification	ETL listed to UL 61800-5-1 and CSA C22.2 No. 274-17
User Interface	Push button membrane keypad with backlit graphic display



230V

230 V

Model / Part Number	HP	Rated Current (Input)	Rated Current (Output)	Enclosure	Enclosure (w/ Bypass)
<i>DX005</i>	5	18 A	18 A	ENC2	-
<i>DX007</i>	7.5	24 A	24 A	ENC2	-
<i>DX010</i>	10	31 A	31 A	ENC2	-
<i>DX015</i>	15	46 A	46 A	ENC2	-
<i>DX020</i>	20	61 A	61 A	ENC2	-
<i>DX025</i>	25	75 A	75 A	ENC2	-
<i>DX030</i>	30	91 A	91 A	ENC2	-



460V

460 V

<i>Model / Part Number</i>	<i>HP</i>	<i>Rated Current (Input)</i>	<i>Rated Current (Output)</i>	<i>Enclosure</i>	<i>Enclosure (w/ Bypass)</i>
DX405	5	9 A	9 A	ENC2	-
DX407	7.5	13 A	13 A	ENC2	-
DX410	10	18 A	18 A	ENC2	-
DX415	15	25 A	25 A	ENC2	-
DX420	20	31 A	31 A	ENC2	ENC4A
DX425	25	38 A	38 A	ENC2	ENC4A
DX430	30	46 A	46 A	ENC2	ENC4A
DX440	40	61 A	61 A	ENC2	ENC4A
DX450	50	77 A	77 A	ENC2	ENC4A
DX460	60	91 A	91 A	ENC4A	ENC6
DX475	75	101 A	107 A	ENC4A	ENC6
DX4100	100	134 A	142 A	ENC4A	ENC6
DX4125	125	163 A	172 A	ENC4A	ENC6
DX4150	150	188 A	198 A	ENC4A	ENC6
DX4200	200	237 A	250 A	ENC4A	ENC6
DX4250	250	288 A	304 A	ENC4A	ENC6
DX4300	300	346 A	362 A	ENC6	-
DX4350	350	394 A	415 A	ENC6	-
DX4400	400	454 A	478 A	ENC6	-
DX4500	500	560 A	590 A	ENC6	-



230V

<i>Model / Part Number</i>	<i>HP</i>	<i>Fuze Rating (Recommended)</i>	<i>Circuit Breaker Rating (Recommended)</i>
<i>DX005</i>	5	20 A, 600 V	20 A
<i>DX007</i>	7.5	30 A, 600 V	30 A
<i>DX010</i>	10	40 A, 600 V	40 A
<i>DX015</i>	15	60 A, 600 V	60 A
<i>DX020</i>	20	80 A, 600 V	80 A
<i>DX025</i>	25	100 A, 600 V	100 A
<i>DX030</i>	30	125 A, 600 V	125 A

230V



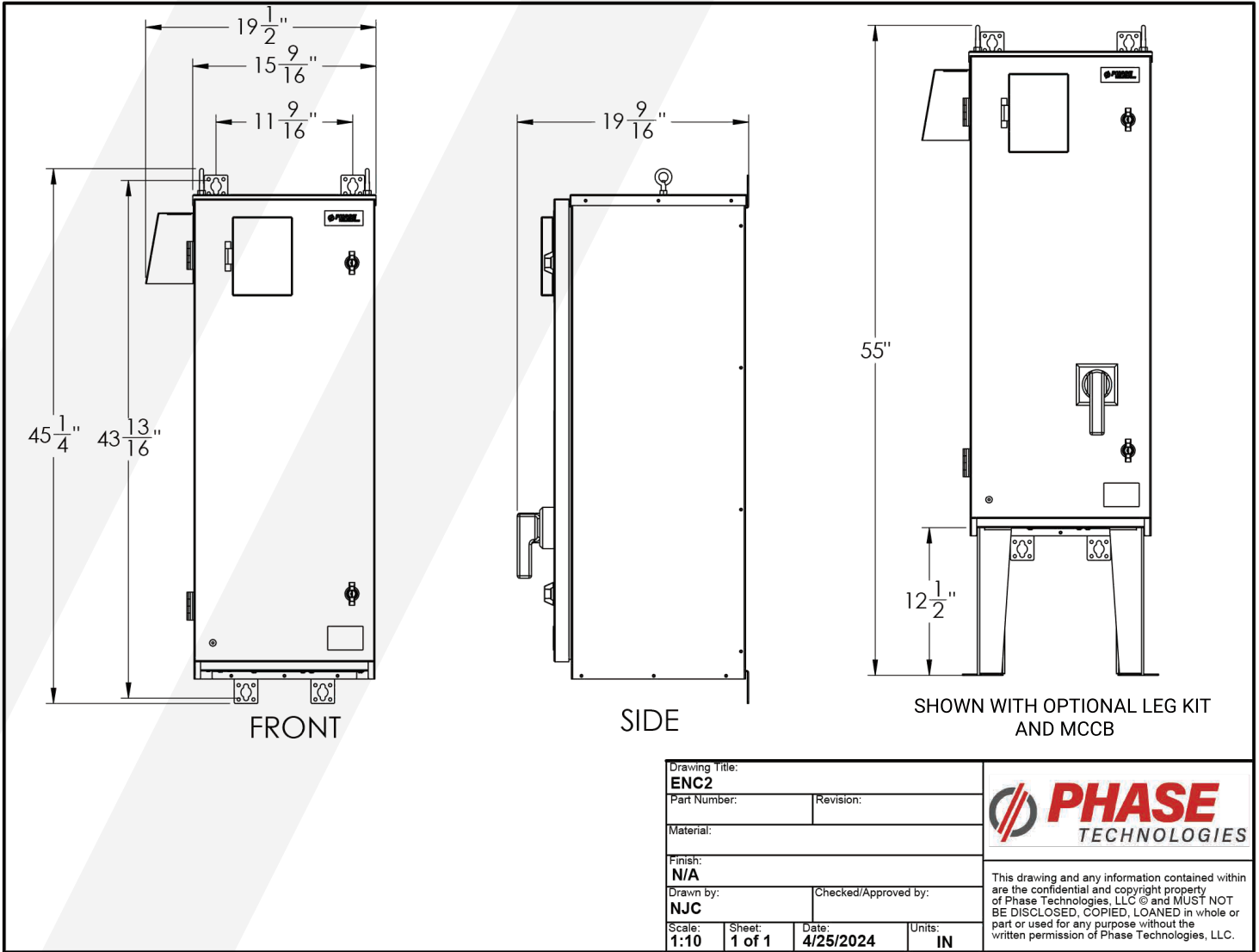
460V

460V

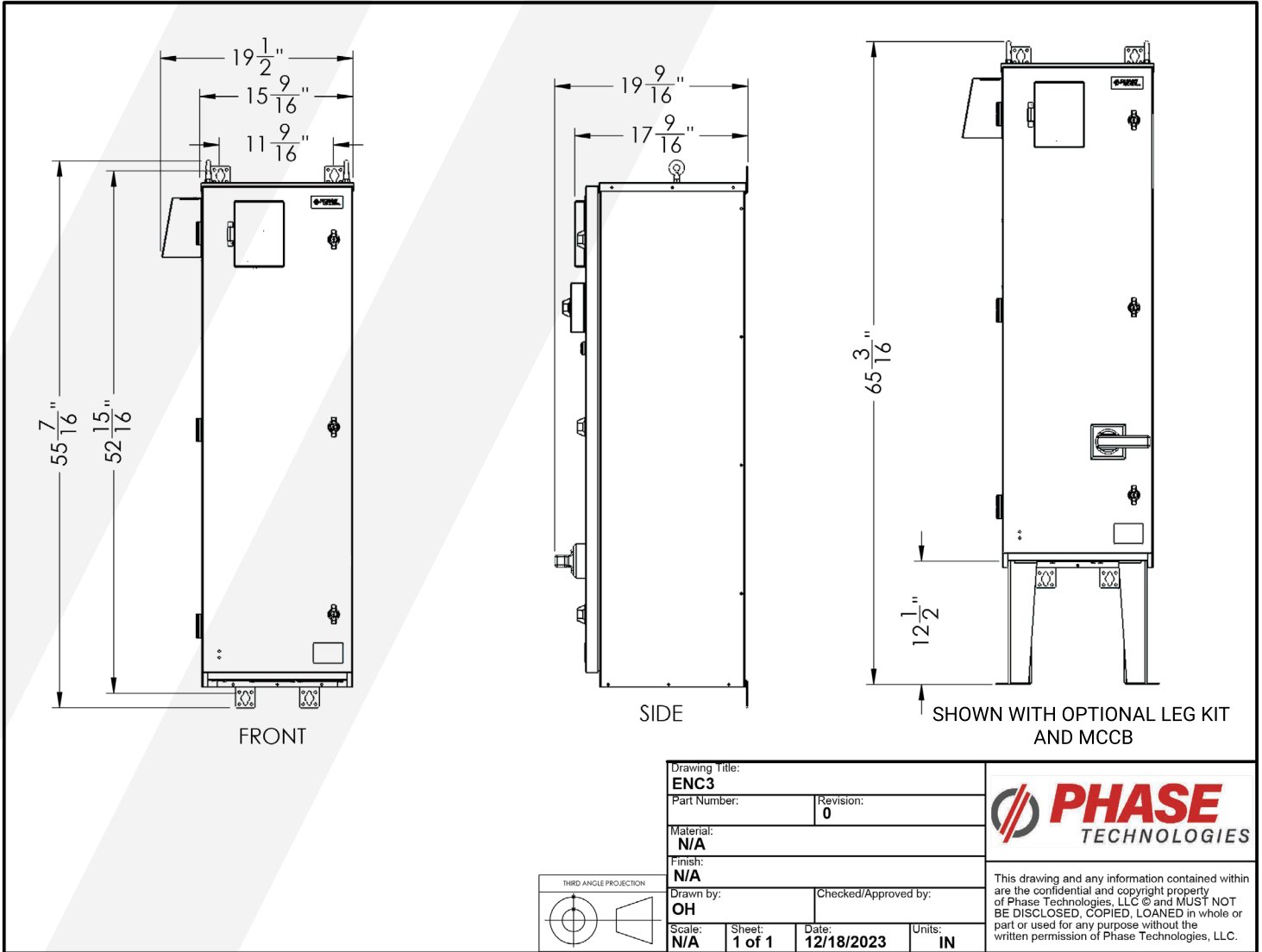
<i>Model / Part Number</i>	<i>HP</i>	<i>Fuze Rating (Recommended)</i>	<i>Circuit Breaker Rating (Recommended)</i>
<i>DX405</i>	5	20 A, 600 V	20 A
<i>DX407</i>	7.5	20 A, 600 V	20 A
<i>DX410</i>	10	30 A, 600 V	30 A
<i>DX415</i>	15	30 A, 600 V	30 A
<i>DX420</i>	20	40 A, 600 V	40 A
<i>DX425</i>	25	50 A, 600 V	50 A
<i>DX430</i>	30	60 A, 600 V	60 A
<i>DX440</i>	40	80 A, 600 V	80 A
<i>DX450</i>	50	100 A, 600 V	100 A
<i>DX460</i>	60	125 A, 600 V	125 A
<i>DX475</i>	75	150 A, 600 V	150 A
<i>DX4100</i>	100	200 A, 600 V	200 A
<i>DX4125</i>	125	225 A, 600 V	225 A
<i>DX4150</i>	150	250 A, 600 V	250 A
<i>DX4200</i>	200	350 A, 600 V	350 A
<i>DX4250</i>	250	400 A, 600 V	400 A
<i>DX4300</i>	300	500 A, 600 V	500 A
<i>DX4350</i>	350	600 A, 600 V	600 A
<i>DX4400</i>	400	700 A, 600 V	700 A
<i>DX4500</i>	500	800 A, 600 V	800 A



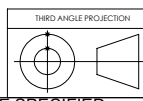
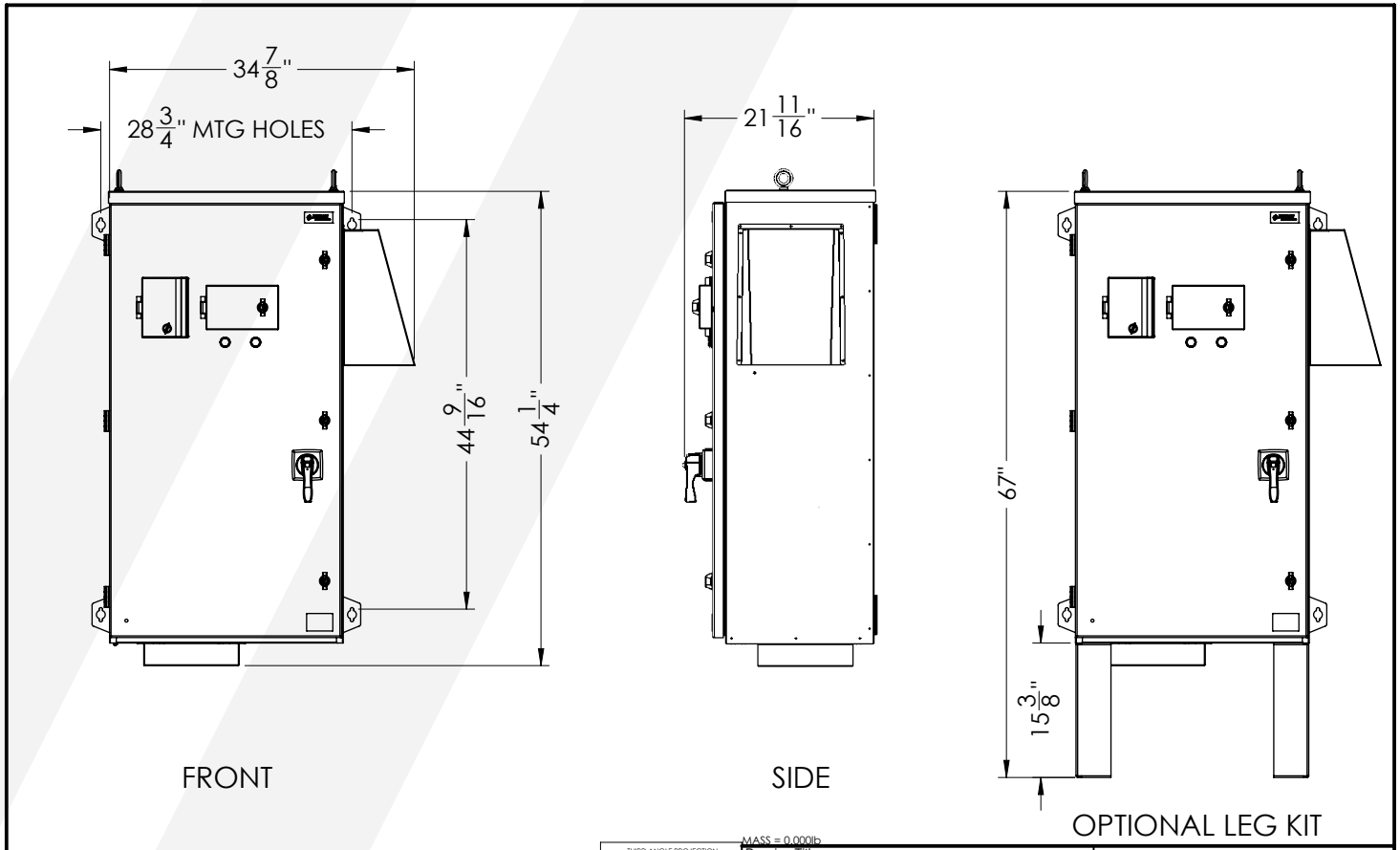
ENC2



ENC3



ENC4A



MASS = 0.000lb			
Drawing Title: ENC4A Standard Enclosure			
Part Number:		Revision: 0	
Material:			
Finish: N/A			
Drawn by: JLT		Checked/Approved by:	
Scale: 1:15	Sheet: 1 of 1	Date: 11/26/2024	Units: IN

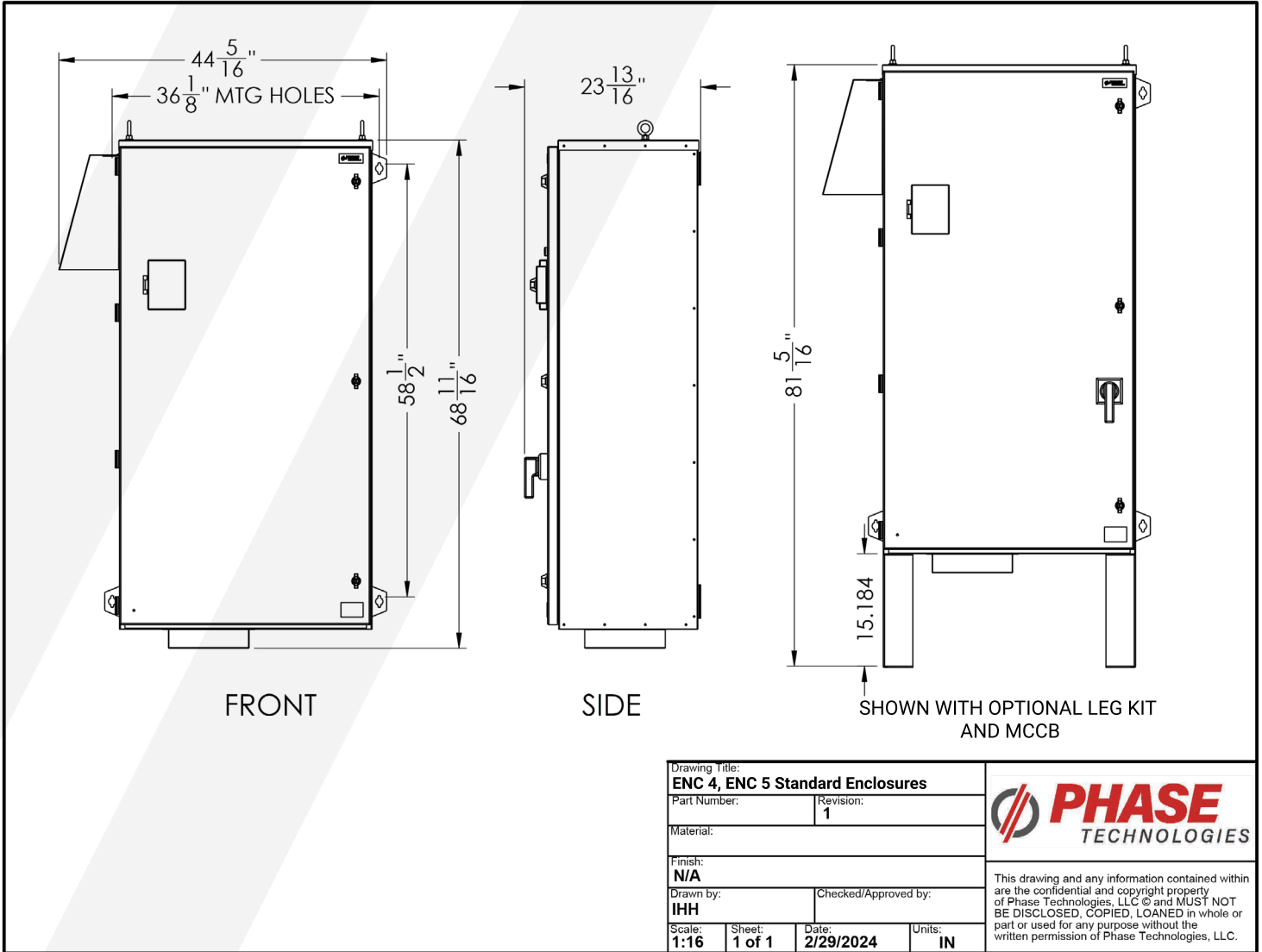
UNLESS OTHERWISE SPECIFIED:
 NO DIM. ±0.060" TO MODEL
 FRACTIONAL ± 1/16"
 0.XX: ±0.06" 0.XXX: ±0.020"
 ANGLES: ±1°
 HOLE Ø: ±0.003" TO MODEL
 HOLE Ⓢ: ±0.010" TO MODEL
 WELD: ANSI STANDARD



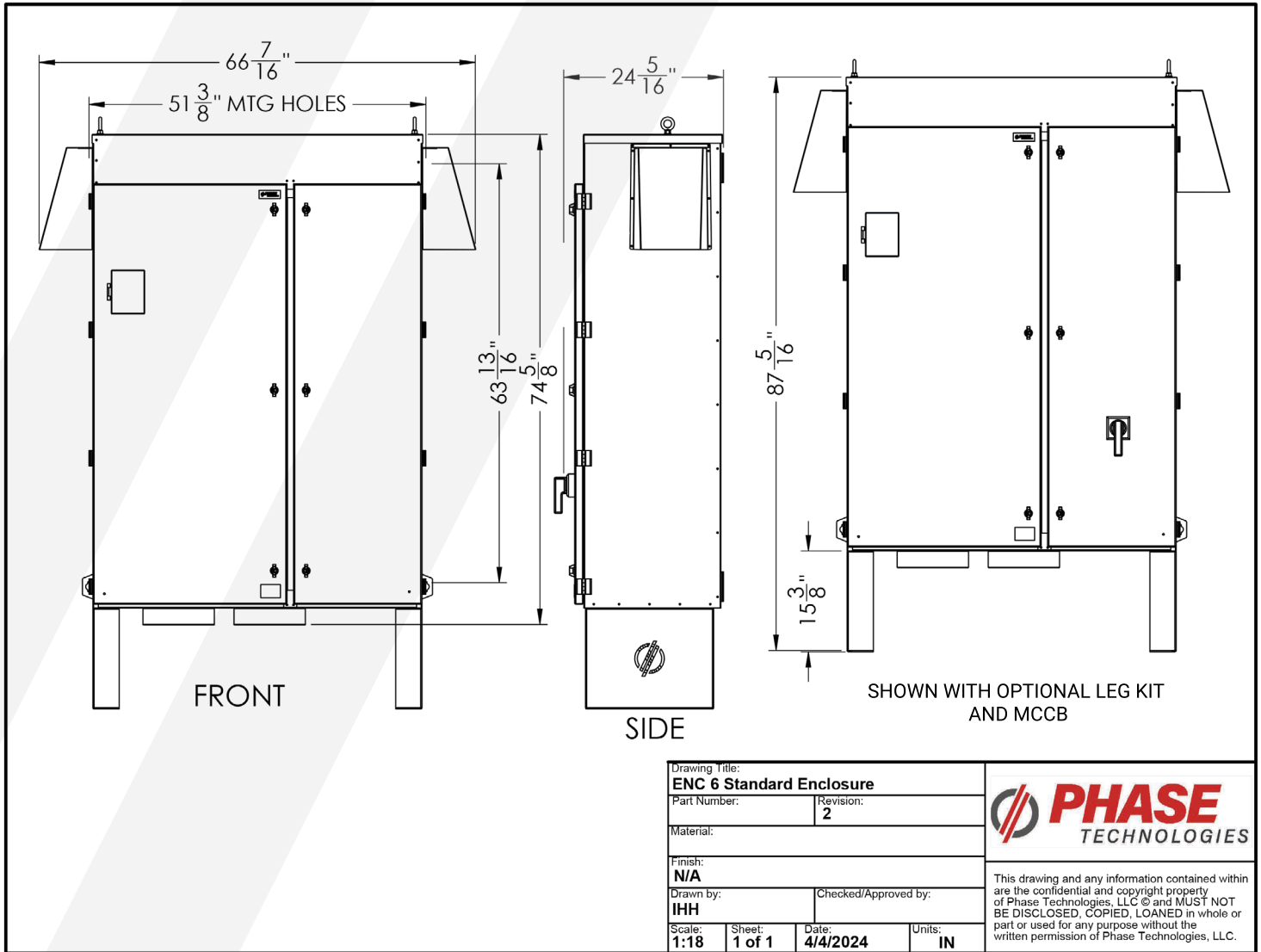
This drawing and any information contained within are the confidential and copyright property of Phase Technologies, LLC © and MUST NOT BE DISCLOSED, COPIED, LOANED in whole or part or used for any purpose without the written permission of Phase Technologies, LLC.



ENC5



ENC6





**DIGITAL PHASE
CONVERTERS**

**VARIABLE
FREQUENCY
DRIVES**

**MOTOR
PROTECTION**

**STARTER
PANELS**

OUR MISSION

Relentlessly seek to provide Uncommon Value, solutions, innovation, and support for the industries that we serve.

